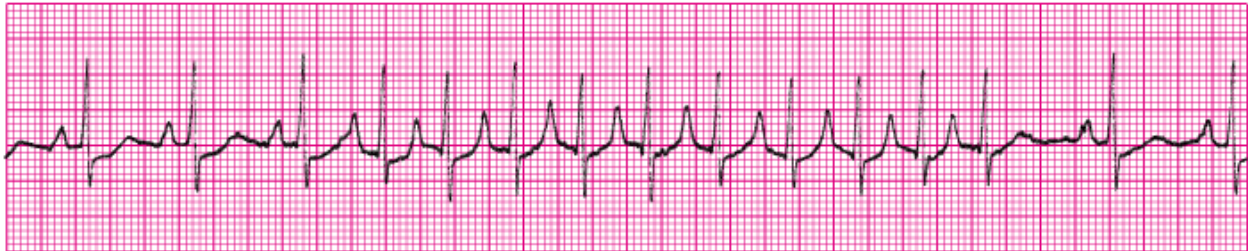


ACLS RHYTHM TEST

Name _____ Date _____

Choose the *best* answer for each of the following questions. Each of the following strips is 6 seconds in length.

1. Identify the following rhythm.



- a. Sinus rhythm with PSVT at 168 beats/min
- b. Ventricular tachycardia at 250 beats/min
- c. Sinus tachycardia at 168 beats/min
- d. Atrial fibrillation at 170 beats/min

2. Identify the following rhythm.



- a. Atrial fibrillation with uniform PVCs
- b. Sinus tachycardia with multiform PVCs
- c. Sinus rhythm with uniform PVCs
- d. Atrial tachycardia with nonconducted PACs

3. Identify the following rhythm.



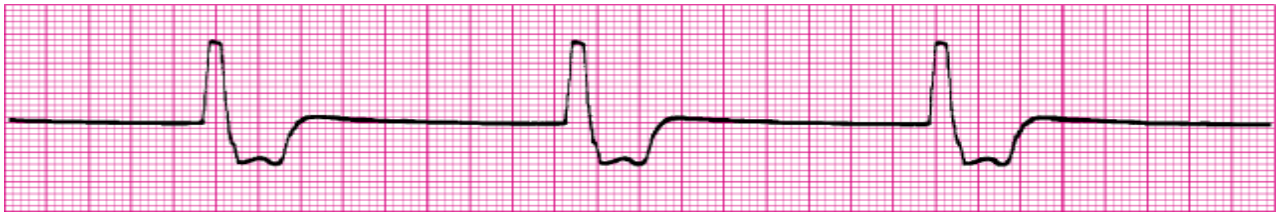
- a. Sinus rhythm at 100 beats/min
- b. Sinus tachycardia at 150 beats/min
- c. Atrial fibrillation at 150 beats/min
- d. Ventricular tachycardia at 140 beats/min

4. Identify the following rhythm.



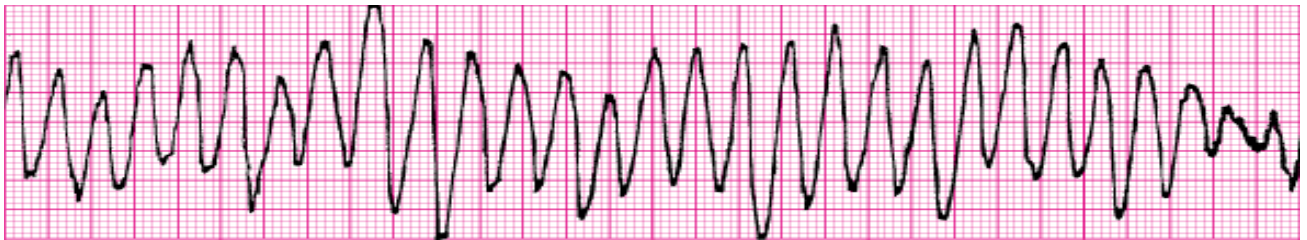
- a. Atrial fibrillation at 90 beats/min
- b. Wenkebach
- c. Sinus rhythm at 90 beats/min
- d. Sinus arrhythmia

5. Identify the following rhythm



- a. Junctional escape
- b. Idioventricular rhythm
- c. Sinus bradycardia
- d. Atrial fibrillation

6. Identify the following rhythm.



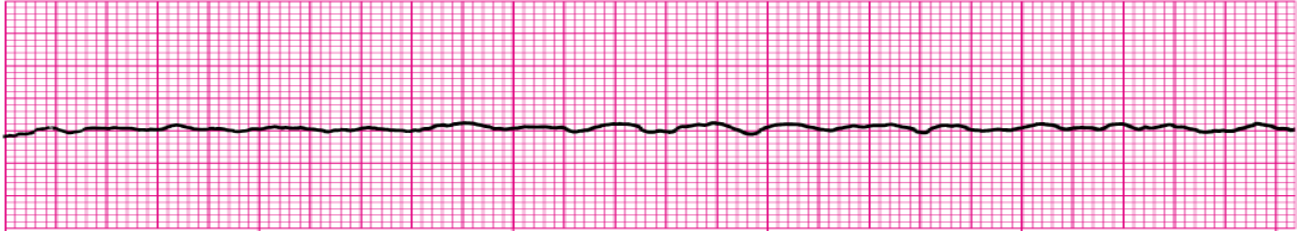
- a. Torsades de pointes
- b. Sinus tachycardia at 250 beats/min
- c. Fine ventricular fibrillation
- d. Supraventricular tachycardia at 250 beats/min

7. Identify the following rhythm.



- a. Second-degree AV block, Type I
- b. Third degree AV block
- c. Normal sinus rhythm with blocked PAC
- d. Sinus bradycardia

8. Identify the following rhythm.



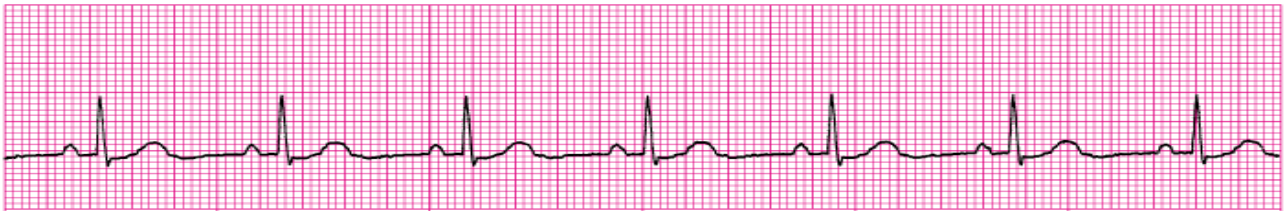
- a. Torsades de pointes
- b. Asystole
- c. Fine ventricular fibrillation
- d. Ventricular tachycardia

9. Identify the following rhythm.



- a. Junctional tachycardia
- b. Supraventricular tachycardia (SVT)
- c. Monomorphic ventricular tachycardia
- d. Torsades de pointes (TdP)

10. Identify the following rhythm.



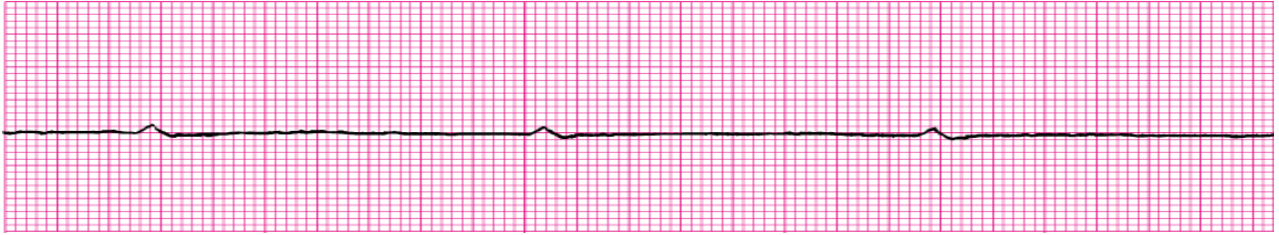
- a. Sinus rhythm at 70 beats/min
- b. Atrial flutter at 70 beats/min
- c. Sinus bradycardia at 58 beats/min
- d. Sinus rhythm at 70 beats/min with 1st degree AV block

11. Identify the following rhythm.



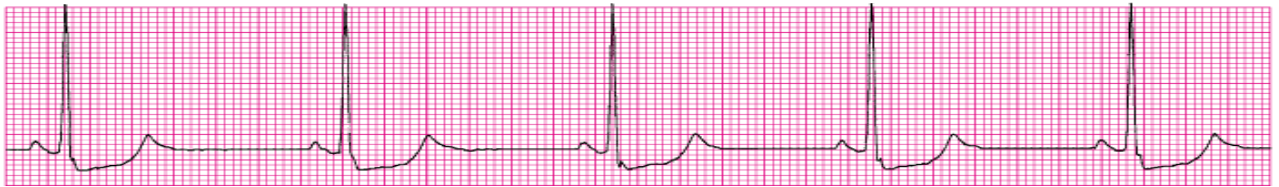
- a. Sinus rhythm with PJC's
- b. Sinus arrhythmia
- c. Sinus tachycardia
- d. Sinus tachycardia with PAC's

12. Identify the following rhythm.



- a. Fine ventricular fibrillation
- b. "P-wave" asystole
- c. Sinus arrest
- d. Nonconducted PACs

13. Identify the following rhythm.



- a. Sinus rhythm with ST segment depression
- b. Sinus bradycardia at 50 beats/min with ST segment depression
- c. Idioventricular rhythm
- d. Junctional rhythm

14. Identify the following rhythm.



- a. Sinus bradycardia
- b. Junctional rhythm
- c. Complete (third-degree) AV block with ventricular escape pacemaker
- d. Slow ventricular tachycardia

15. Identify the following rhythm.



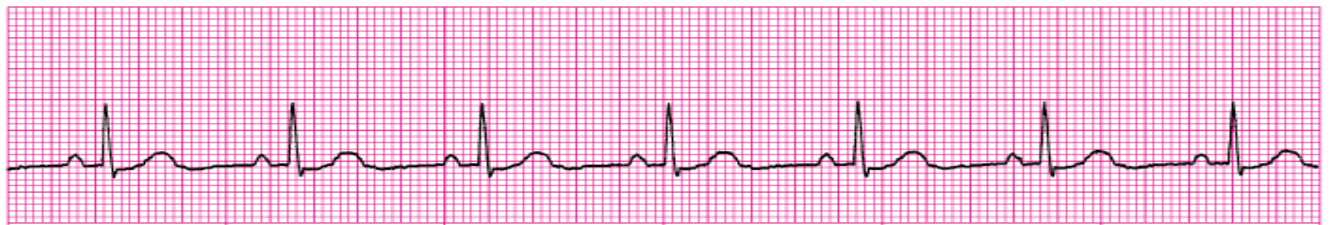
- a. Atrial flutter
- b. Atrial fibrillation
- c. Wandering atrial pacemaker
- d. Premature atrial complexes

16. Identify the following rhythm.



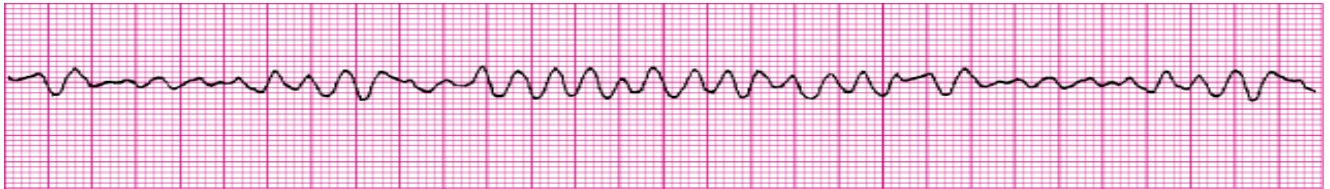
- a. Sinus rhythm with interventricular conduction delay
- b. Sinus rhythm with Bigeminal PVCs
- c. Complete heart block
- d. Second degree AV block, Type II with 2:1 conduction

17. Identify the following clinical situation. Patient monitor shows the following rhythm. PATIENT HAS NO PULSE.



- a. Sinus rhythm at 85 beats/min
- b. Sinus tachycardia at 95 beats/min
- c. Supraventricular tachycardia at 95 beats/min
- d. Pulseless Electrical Activity (PEA)

18. Identify the following rhythm.



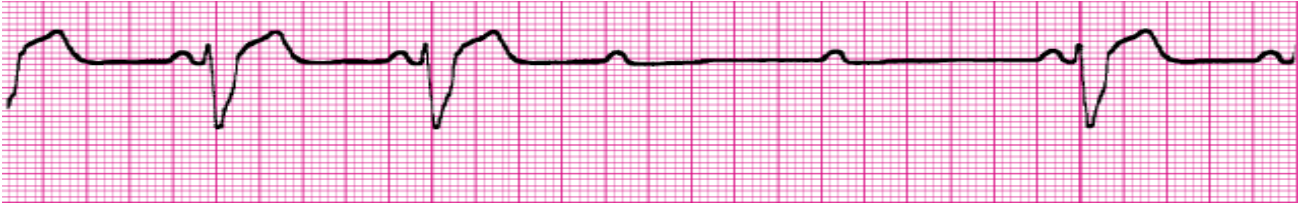
- a. Ventricular tachycardia
- b. Coarse ventricular fibrillation
- c. Artifact
- d. Atrial flutter

19. Identify the following rhythm (lead III)



- a. 100% ventricular paced rhythm
- b. Pacemaker rhythm – failure to capture
- c. Ventricular escape rhythm
- d. Accelerated idioventricular rhythm (AIVR)

20. Identify the following rhythm.



- a. Second-degree AV block, Type II
- b. Idioventricular escape rhythm
- c. Sinus bradycardia
- d. Atrial flutter

21. Identify the following rhythm.



- a. Sinus bradycardia at 50 beats/min
- b. Sinus rhythm at 60 with a first-degree AV block
- c. Atrial fibrillation at 60 beats/min
- d. Second-degree AV block, Type I

22. Identify the following rhythm.



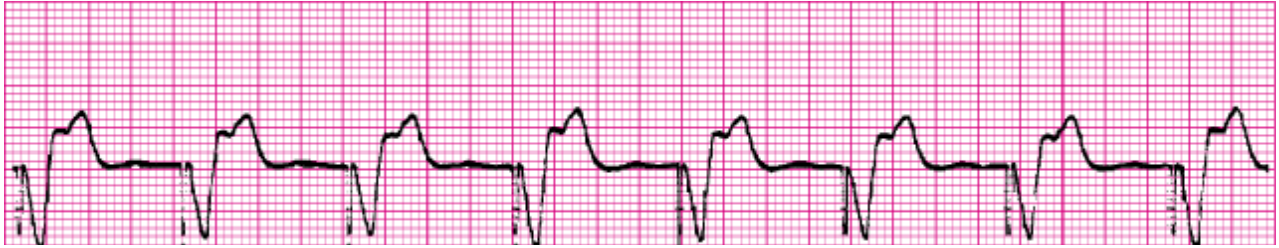
- a. Sinus bradycardia at 60 beats/min
- b. Sinus rhythm with a sinus arrest
- c. Idioventricular rhythm
- d. Sinus bradycardia with a blocked PAC

23. Identify the following rhythm



- a. Sinus rhythm at 88 beats/min with a couplet PVC and a triplet PVC
- b. Atrial fibrillation at 110 beats/min with uniform PVCs
- c. Ventricular tachycardia at 300 beats/min
- d. Sinus rhythm at 88 beats/min with PACs

24. Identify the following rhythm.



- a. Failure to capture
- b. 100% ventricular pacing
- c. Sinus bradycardia
- d. Ventricular tachycardia

25. Identify the following rhythm.



- a. Sinus tachycardia
- b. Sinus rhythm with PACs
- c. Junctional tachycardia at a rate of 125 beats/min
- d. Second-degree heart block with a 2:1 conduction